

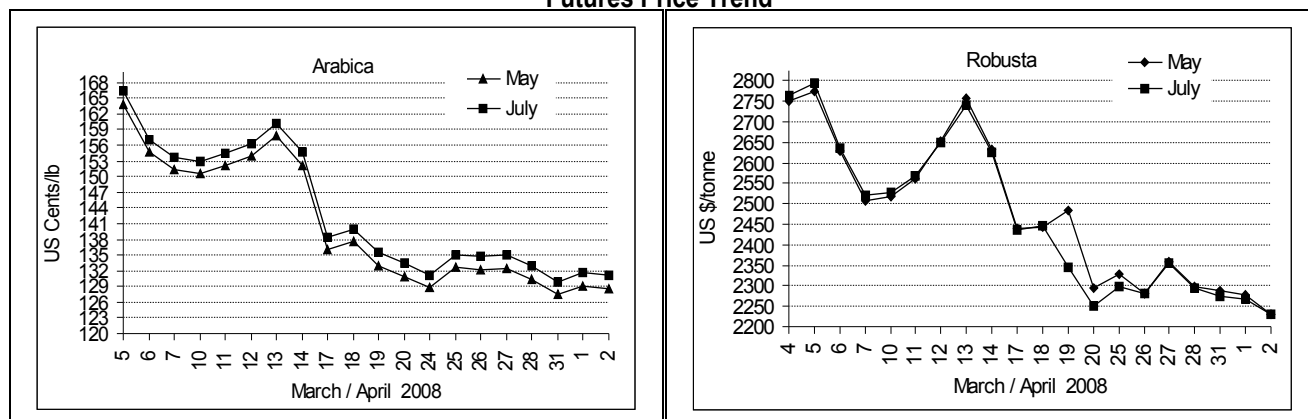
COFFEE BOARD: BANGALORE
Daily Coffee Market Report Thursday April 03, 2008

Futures Prices 02.04.2008					
ICE (New York) US cents / lb			London US \$ / tonne and cents / lb in brackets		
Month	Price	Prev. Price	Month	Price	Prev. Price
May - 2008	128.65	129.10	May - 2008	2229 (101.11)	2279 (103.37)
July - 2008	131.20	131.65	July - 2008	2231 (101.20)	2267 (102.83)
Sep - 2008	133.65	134.15	Sep - 2008	2232 (101.24)	2263 (102.65)

ICO Daily weighted average price on 01.04.2008 and previous price in brackets (US cents/lb)

Other Mild Arabica	Robusta	Exchange Rate Rs./ US \$
135.51 (135.14)	110.88 (111.19)	39.98

Futures Price Trend



Market Analysis

ICE arabica coffee futures finished lower on Wednesday, erasing a more than 2-cent surge to two-day highs as speculators took profits and May-July rollovers were done. The market rebounded in after-hours activity, however. ICE May arabica coffee settled down 45 points at \$1.2865 a pound, with July off 45 points. The ICE May robusta coffee settled 100 points lower at \$1.03 a pound. London May robusta contract closed at an almost two-week low. LIFFE May settled down \$50 at \$2229/tonne while July settled down \$36 at \$2231/tonne.

Differentials:	Ar. Plant. A	Ar.Chy.AB	Rob.Pmt.AB	Rob.Chy.AB
	NY +0	NY -22	LIFFE +450	LIFFE +70

ICTA Auction Prices Rs/Kg as on 27.03.2008

Grade	MNEB/AA	PB	A	AB	B	C	BBB
Arabica Plantation	122.84	119.14	---	---	---	105.00	---
Arabica Cherry	---	102.00	---	104.12	---	---	84.50
	RKR	PB	AA	AB		C	BBB
Robusta Parchment	116.40	109.00	116.40	114	---	---	85.00
Robusta Cherry	---	---	---	---	---	---	86.00

Raw Coffee Price (Karnataka) as on 31.03.2008 in Rs./50 kg

Ar.Pmt	Ar.Chy	Rob.Pmt	Rob.Chy
4200 - 4400	2100 - 2150	4000 - 4250	2100 - 2150

Export update: From 1st January to April 02, 2008 (in metric tonnes)

	INDIAN COFFEE	Ar.Pmt	Ar.Chy	Rob.Pmt	Rob.Chy	Instant	Total
1	Provisional exports (Indian coffee)	15525	4082	5148	28272	9457	62484
2	Provisional exports corresponding period last year	9881	4683	5322	29676	12965	62527
3	Provisional re-exports					11466	11466
4	Provisional re-exports corresponding period last year					6006	6006
5	Total provisional exports (1+3)	15525	4082	5148	28272	20923	73950
6	Total provisional exports corresponding period last year (2+4)	9881	4683	5322	29676	18971	68533

Disclaimer: The Board neither guarantees the accuracy of the information nor accept any liability whatsoever for any direct or consequential loss arising from the use of this report.