

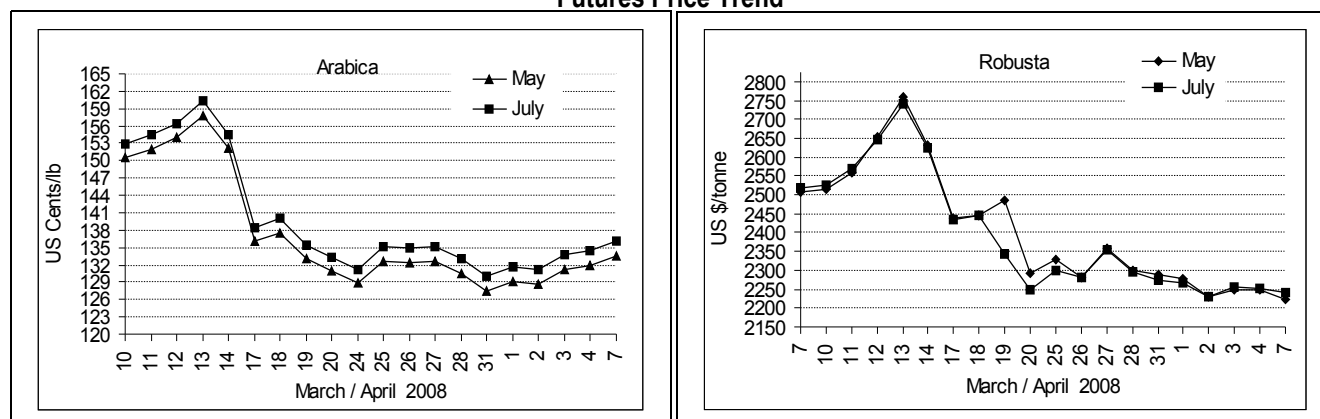
COFFEE BOARD: BANGALORE
Daily Coffee Market Report Tuesday April 08, 2008

Futures Prices 07.04.2008					
ICE (New York) US cents / lb			London US \$ / tonne and cents / lb in brackets		
Month	Price	Prev. Price	Month	Price	Prev. Price
May - 2008	133.60	131.90	May - 2008	2222 (100.79)	2248 (101.97)
July - 2008	136.15	134.45	July - 2008	2242 (101.70)	2253 (102.19)
Sep - 2008	138.65	136.95	Sep - 2008	2248 (101.97)	2249 (102.01)

ICO Daily weighted average price on 04.04.2008 and previous price in brackets (US cents/lb)

Other Mild Arabica	Robusta	Exchange Rate Rs./ US \$
138.98 (138.30)	110.23 (110.25)	39.93

Futures Price Trend



Market Analysis

ICE arabica coffee futures advanced on Monday, reaching one-week highs in good volume as shorts covered while other commodities strengthened and May rollovers continued. ICE May arabica coffee settled up 170 points at \$1.3360 a pound, with July gaining 170 points to \$1.3615. ICE May robusta coffee settled unchanged at \$1.03 a pound. Robusta coffee prices in London fell for a second day on speculation that Asian Countries especially Vietnam will seek to boost sales before prices extend declines. LIFFE May settled down \$26 at \$2222/tonne while July settled down \$11 at \$2242/tonne.

Differentials:	Ar. Plant. A	Ar.Chy.AB	Rob.Pmt.AB	Rob.Chy.AB
	NY +1	NY -22	LIFFE +450	LIFFE +70

ICTA Auction Prices Rs/Kg as on 03.04.2008

Grade	MNEB/AA	PB	A	AB	B	C	BBB
Arabica Plantation	121.88	---	---	---	---	---	89.36
Arabica Cherry	---	---	---	---	---	---	---
	RKR	PB	AA	AB		C	BBB
Robusta Parchment	119.00	---	---	---	---	---	86.00
Robusta Cherry	---	---	---	---	---	---	86.00

Raw Coffee Price (Karnataka) as on 05.04.2008 in Rs./50 kg

Ar.Pmt	Ar.Chy	Rob.Pmt	Rob.Chy
4500 - 4625	2350 - 2425	4400 - 4500	2100 - 2200

Export update: From 1st January to April 07, 2008 (in metric tonnes)

	INDIAN COFFEE	Ar.Pmt	Ar.Chy	Rob.Pmt	Rob.Chy	Instant	Total
1	Provisional exports (Indian coffee)	15580	4175	5395	28781	9494	63425
2	Provisional exports corresponding period last year	10027	4746	5351	30226	13241	63591
3	Provisional re-exports					11550	11550
4	Provisional re-exports corresponding period last year					6006	6006
5	Total provisional exports (1+3)	15580	4175	5395	28781	21044	74975
6	Total provisional exports corresponding period last year (2+4)	10027	4746	5351	30226	19247	69597

Disclaimer: The Board neither guarantees the accuracy of the information nor accept any liability whatsoever for any direct or consequential loss arising from the use of this report.