

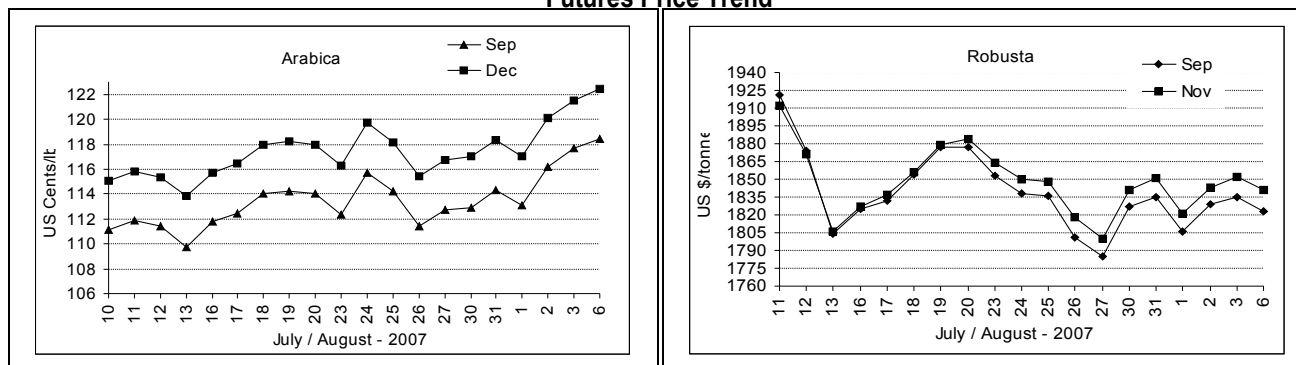
**COFFEE BOARD: BANGALORE**  
**Daily Coffee Market Report Tuesday August 07, 2007**

Futures Prices 06.08.2007					
New York US cents / lb			London US \$ / tonne and cents / lb in brackets		
Month	Price	Prev. Price	Month	Price	Prev. Price
Sep – 2007	118.40	117.65	Sep – 2007	1823 (82.69)	1835 (83.23)
Dec – 2007	122.40	121.55	Dec – 2007	1841 (83.51)	1852 (84.01)
Mar – 2008	126.00	125.10	Jan – 2008	1825 (82.78)	1835 (83.23)

**ICO Indicator Prices of 03.08.2007 and previous price in brackets (US cents/lb)**

<b>Arabica (N.Y)</b>	<b>Robusta (N.Y)</b>	<b>Exchange Rate Rs./ US \$</b>
124.88 (123.63)	92.75 (92.25)	40.45

**Futures Price Trend**



**Market Analysis**

NYBOT arabica coffee futures strengthened on Monday as speculators and locals bid the market up through buy stops to two-month highs, before origin selling capped the advance. Nybot September closed up 75 points in the pit at \$1.1840 a pound, with December up 85 points at \$1.2240. LIFFE September settled down \$12 at \$1823/tonne while November settled down \$11 at \$1841/tonne.

**Global:** Brazilian supplies are expected to tighten in late 2007 and growers have government subsidies to help them hold new crop off the market, waiting for prices to rise further. After Brazil's cyclically smaller harvest ends in September, traders will turn their attention to the September-October blossoming of the next crop.

<b>Differentials:</b>	<b>Ar. Plant. A</b>	<b>Ar.Chy.AB</b>	<b>Rob.Pmt.AB</b>	<b>Rob.Chy.AB</b>
	NY +4	NY -15	LIFFE +530	LIFFE +110

**ICTA Auction Prices Rs/Kg as on 02.08.2007**

Grade	MNEB/AA	PB	A	AB	B	C	BBB
Arabica Plantation	----	130.00	----	----	----	87.50	----
Arabica Cherry	----	87.80	----	----	----	73.00	----
	<b>RKR</b>	<b>PB</b>	<b>AA</b>	<b>AB</b>	<b>C</b>	<b>BBB</b>	
Robusta Parchment	----	----	----	----	----	73.50	
Robusta Cherry	----	----	79.08	77.28	----	----	

**Raw Coffee Price (Karnataka) as on 06.08.2007 in Rs./50 kg**

<b>Ar.Pmt</b>	<b>Ar.Chy</b>	<b>Rob.Pmt</b>	<b>Rob.Chy</b>
4075 - 4225	1950 - 2050	3550 - 3700	1800 - 1825

**Export update: From 1<sup>st</sup> Jan to August 06, 2007 (in metric tonnes)**

	INDIAN COFFEE	Ar.Pmt	Ar.Chy	Rob.Pmt	Rob.Chy	Instant	Total
1	Provisional exports (Indian coffee)	22881	8109	15753	61742	30581	139066
2	Exports corresponding period last year	40857	8152	15500	62050	11578	138137
3	Provisional re exports	---	---	---	---	7910	7910
4	Re exports corresponding period last year	---	---	---	---	18205	18205
5	Total provisional exports (1+3)	22881	8109	15753	61742	38491	146976
6	Total exports corresponding period last year (2+4)	40857	8152	15500	62050	29783	156342

Disclaimer: The Board neither guarantees the accuracy of the information nor accept any liability whatsoever for any direct or consequential loss arising from the use of this report.