

COFFEE BOARD: BANGALORE
Daily Coffee Market Report Wednesday August 29, 2007

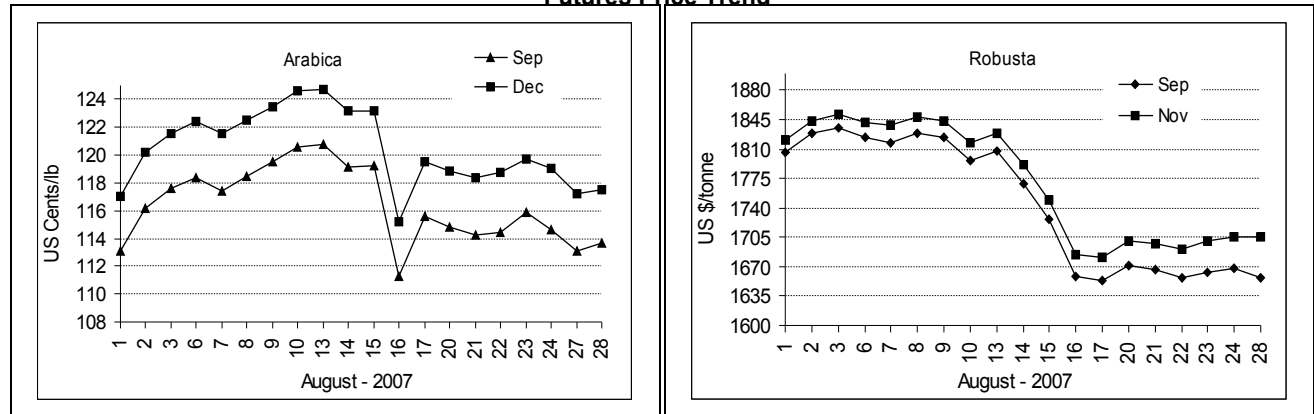
Futures Prices 28.08.2007					
New York US cents / lb			London US \$ / tonne and cents / lb in brackets		
Month	Price	Prev. Price	Month	Price	Prev. Price
Sep – 2007	113.65	113.10	Sep – 2007	1657 (75.16)	1668 (75.66)
Dec – 2007	117.55	117.20	Dec – 2007	1706 (77.38)	1706 (77.38)
Mar – 2008	121.35	120.95	Jan – 2008	1710 (77.56)	1715 (77.79)

ICO Indicator Prices of 27.08.2007 and previous price in brackets (US cents/lb)

Arabica (N.Y)	Robusta (N.Y)
121.25 (123.00)	85.63 (85.63)

Exchange Rate Rs./ US \$
41.12

Futures Price Trend



Market Analysis

NYBOT coffee futures closed slightly higher and near the session's mid-range Tuesday. Industry buying slightly offset local and speculator selling. December coffee closed up 35 points at 118.30 cents. LIFFE robusta coffee prices closed flat to lower Tuesday, with the focus on rolling out of front-month September and weakness in the nearby structure. Front-month September ended down \$11 at \$1,657 a metric tone while November ended unchanged at \$1,706/ton with 9,537 contracts traded.

Differentials:	Ar. Plant. A	Ar.Chy.AB	Rob.Pmt.AB	Rob.Chy.AB
	NY +4	NY -15	LIFFE +530	LIFFE +110

ICTA Auction Prices Rs/Kg as on 23.08.2007

Grade	MNEB/AA	PB	A	AB	B	C	BBB
Arabica Plantation	109.34	131.00	----	----	98.00	92.00	80.32
Arabica Cherry	----	88.00	----	----	----	76.00	----
	RKR	PB	AA	AB	C	BBB	
Robusta Parchment	----	----	----	----	----	73.00	
Robusta Cherry	----	----	77.50	80.00	77.00	----	

Raw Coffee Price (Karnataka) as on 24.08.2007 in Rs./50 kg

Ar.Pmt	Ar.Chy	Rob.Pmt	Rob.Chy
4000 - 4200	1950 - 2150	3600 - 3700	1710 - 1810

Export update: From 1st Jan to August 28, 2007 (in metric tonnes)

	INDIAN COFFEE	Ar.Pmt	Ar.Chy	Rob.Pmt	Rob.Chy	Instant	Total
1	Provisional exports (Indian coffee)	24499	8348	16642	66512	33433	149434
2	Exports corresponding period last year	42828	8415	17719	69655	12686	151303
3	Provisional re exports	---	---	---	---	8836	8836
4	Re exports corresponding period last year	---	---	---	---	19797	19797
5	Total provisional exports (1+3)	24499	8348	16642	66512	42269	158270
6	Total exports corresponding period last year (2+4)	42828	8415	17719	69655	32483	171100

Disclaimer: The Board neither guarantees the accuracy of the information nor accept any liability whatsoever for any direct or consequential loss arising from the use of this report.