

COFFEE BOARD: BANGALORE
Daily Coffee Market Report Wednesday December 05, 2007

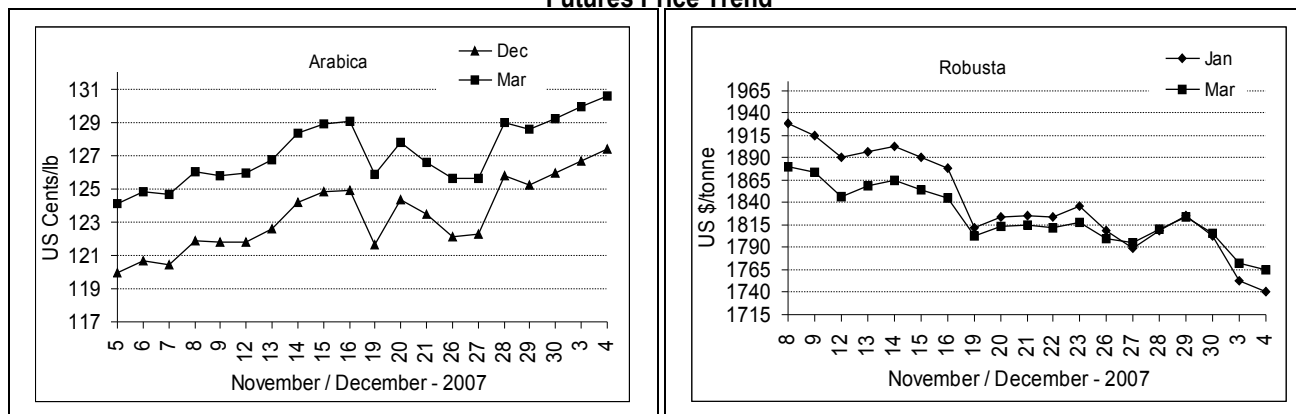
Futures Prices 04.12.2007

| ICE (New York) US cents / lb | | | London US \$ / tonne and cents / lb in brackets | | |
|------------------------------|--------|-------------|---|--------------|--------------|
| Month | Price | Prev. Price | Month | Price | Prev. Price |
| Dec – 2007 | 127.35 | 126.65 | Jan – 2008 | 1740 (78.93) | 1753 (79.51) |
| Mar – 2008 | 130.60 | 129.95 | Mar – 2008 | 1765 (80.06) | 1773 (80.42) |
| May – 2008 | 133.10 | 132.45 | May – 2008 | 1784 (80.92) | 1791 (81.24) |

ICO Daily weighted average price on 03.12.2007 and previous price in brackets (US cents/lb)

| Other Mild Arabica | Robusta | Exchange Rate Rs./ US \$ |
|--------------------|---------------|--------------------------|
| 134.81 (134.29) | 87.83 (90.19) | 39.43 |

Futures Price Trend



Market Analysis

ICE pit-traded arabica coffee futures prices finished modestly higher and nearer the session high, and closed at a bullish six-week high close Tuesday. March coffee closed up 45 points at 130.40 cents. LIFFE robusta coffee futures were firmer overnight on short covering. The tone of the robusta market is still bearish given the bumper crops in Vietnam and Brazil. LIFFE Jan settled down \$13 at \$1740/tonne while Mar settled down \$8 at \$1765/tonne.

Global: Weather in Brazil coffee regions has been dry with temperatures above normal. There are some forecasts for scattered showers in the coming days. Growing conditions are termed favorable, at present, in Brazil coffee regions. The industry is waiting for a Brazilian new-crop estimate Wednesday from consultants Safras e Mercado, along with a USDA tropical products report on coffee Friday. The Brazilian government is to issue an old-crop coffee estimate on Dec. 14.

| Differentials: | Ar. Plant. A | Ar.Chy.AB | Rob.Pmt.AB | Rob.Chy.AB |
|----------------|--------------|-----------|------------|------------|
| | NY +3 | NY -15 | LIFFE +530 | LIFFE +130 |

ICTA Auction Prices Rs/Kg as on 29.11.2007

| Grade | MNEB/AA | PB | A | AB | B | C | BBB |
|--------------------|------------|-----------|-----------|-----------|----------|------------|-------|
| Arabica Plantation | 112.00 | ---- | 108.84 | ---- | 99.28 | 95.10 | 80.00 |
| Arabica Cherry | ---- | 96.16 | | 99.52 | ---- | 84.00 | ---- |
| | RKR | PB | AA | AB | C | BBB | |
| Robusta Parchment | ---- | ---- | ---- | ---- | ---- | ---- | |
| Robusta Cherry | --- | ---- | 80.00 | 78.38 | 76.00 | 74.00 | |

Raw Coffee Price (Karnataka) as on 04.12.2007 in Rs./50 kg

| Ar.Pmt | Ar.Chy | Rob.Pmt | Rob.Chy |
|-------------|-------------|-------------|-------------|
| 4175 - 4300 | 2175 - 2325 | 3775 - 4100 | 1825 - 1950 |

Export update: From 1st January to December 04, 2007 (in metric tonnes)

| INDIAN COFFEE | | Ar.Pmt | Ar.Chy | Rob.Pmt | Rob.Chy | Instant | Total |
|---------------|--|--------------|--------------|--------------|---------------|--------------|---------------|
| 1 | Provisional exports (Indian coffee) | 29601 | 11134 | 20432 | 85548 | 46291 | 193006 |
| 2 | Provisional exports corresponding period last year | 46414 | 10588 | 24349 | 101568 | 24091 | 207010 |
| 3 | Provisional re-exports | --- | --- | --- | --- | 15694 | 15694 |
| 4 | Provisional re-exports corresponding period last year | --- | --- | --- | --- | 30009 | 30009 |
| 5 | Total provisional exports (1+3) | 29601 | 11134 | 20432 | 85548 | 61985 | 208700 |
| 6 | Total provisional exports corresponding period last year (2+4) | 46414 | 10588 | 24349 | 101568 | 54100 | 237019 |

Disclaimer: The Board neither guarantees the accuracy of the information nor accept any liability whatsoever for any direct or consequential loss arising from the use of this report.