

**COFFEE BOARD: BANGALORE**  
**Daily Coffee Market Report Thursday December 06, 2007**

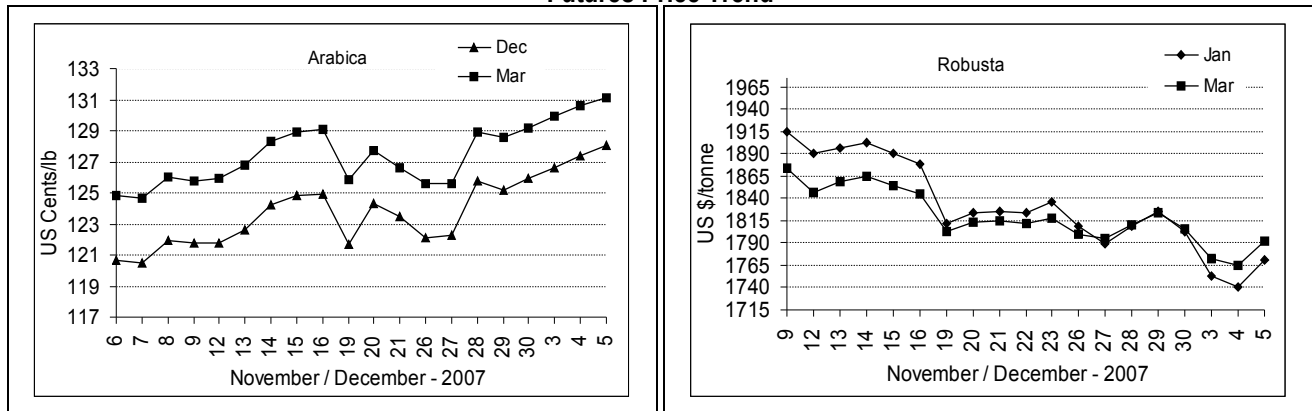
**Futures Prices 05.12.2007**

| ICE (New York) US cents / lb |        |             | London US \$ / tonne and cents / lb in brackets |              |              |
|------------------------------|--------|-------------|---|--------------|--------------|
| Month                        | Price  | Prev. Price | Month   | Price        | Prev. Price  |
| Dec – 2007                   | 128.05 | 127.35      | Jan – 2008                                      | 1771 (80.33) | 1740 (78.93) |
| Mar – 2008                   | 131.15 | 130.60      | Mar – 2008                                      | 1792 (81.28) | 1765 (80.06) |
| May – 2008                   | 133.65 | 133.10      | May – 2008                                      | 1809 (82.05) | 1784 (80.92) |

**ICO Daily weighted average price on 04.12.2007 and previous price in brackets (US cents/lb)**

| Other Mild Arabica | Robusta       | Exchange Rate Rs./ US \$ |
|--------------------|---------------|--------------------------|
| 135.36 (134.81)    | 87.47 (87.83) | 39.45                    |

**Futures Price Trend**



**Market Analysis**

ICE pit-traded arabica coffee futures prices closed higher, near the session high and also closed at another technically bullish fresh six-week high close. March coffee ended up 50 points at \$1.3110. Fresh speculative buying interest was seen in the coffee futures market Wednesday. London robusta coffee futures were weaker in overnight trading. Present futures prices look undervalued. LIFFE Jan settled up \$31 at \$1771/tonne while Mar settled up \$27 at \$1792/tonne.

| Differentials: | Ar. Plant. A | Ar.Chy.AB | Rob.Pmt.AB | Rob.Chy.AB |
|----------------|--------------|-----------|------------|------------|
|                | NY +3        | NY -15    | LIFFE +530 | LIFFE +130 |

**ICTA Auction Prices Rs/Kg as on 29.11.2007**

| Grade              | MNEB/AA | PB    | A      | AB    | B     | C     | BBB   |
|--------------------|---------|-------|--------|-------|-------|-------|-------|
| Arabica Plantation | 112.00  | ----  | 108.84 | ----  | 99.28 | 95.10 | 80.00 |
| Arabica Cherry     | ----    | 96.16 |        | 99.52 | ----  | 84.00 | ----  |
|                    | RKR     | PB    | AA     | AB    | C     | BBB   |       |
| Robusta Parchment  | ----    | ----  | ----   | ----  | ----  | ----  |       |
| Robusta Cherry     | ---     | ----  | 80.00  | 78.38 | 76.00 | 74.00 |       |

**Raw Coffee Price (Karnataka) as on 04.12.2007 in Rs./50 kg**

| Ar.Pmt      | Ar.Chy      | Rob.Pmt     | Rob.Chy     |
|-------------|-------------|-------------|-------------|
| 4175 - 4300 | 2175 - 2325 | 3775 - 4100 | 1825 - 1950 |

**Export update: From 1<sup>st</sup> January to December 05, 2007 (in metric tonnes)**

| INDIAN COFFEE |  | Ar.Pmt       | Ar.Chy       | Rob.Pmt      | Rob.Chy       | Instant      | Total         |
|---------------|--|--------------|--------------|--------------|---------------|--------------|---------------|
| 1             | Provisional exports (Indian coffee)                            | 29659        | 11172        | 20511        | 85817         | 46333        | 193492        |
| 2             | Provisional exports corresponding period last year             | 46428        | 10605        | 24349        | 101770        | 24210        | 207362        |
| 3             | Provisional re-exports   | ---          | ---          | ---          | ---           | 15951        | 15951         |
| 4             | Provisional re-exports corresponding period last year          | ---          | ---          | ---          | ---           | 30448        | 30448         |
| 5             | Total provisional exports (1+3)                                | <b>29659</b> | <b>11172</b> | <b>20511</b> | <b>85817</b>  | <b>62284</b> | <b>209443</b> |
| 6             | Total provisional exports corresponding period last year (2+4) | <b>46428</b> | <b>10605</b> | <b>24349</b> | <b>101770</b> | <b>54658</b> | <b>237810</b> |

Disclaimer: The Board neither guarantees the accuracy of the information nor accept any liability whatsoever for any direct or consequential loss arising from the use of this report.