

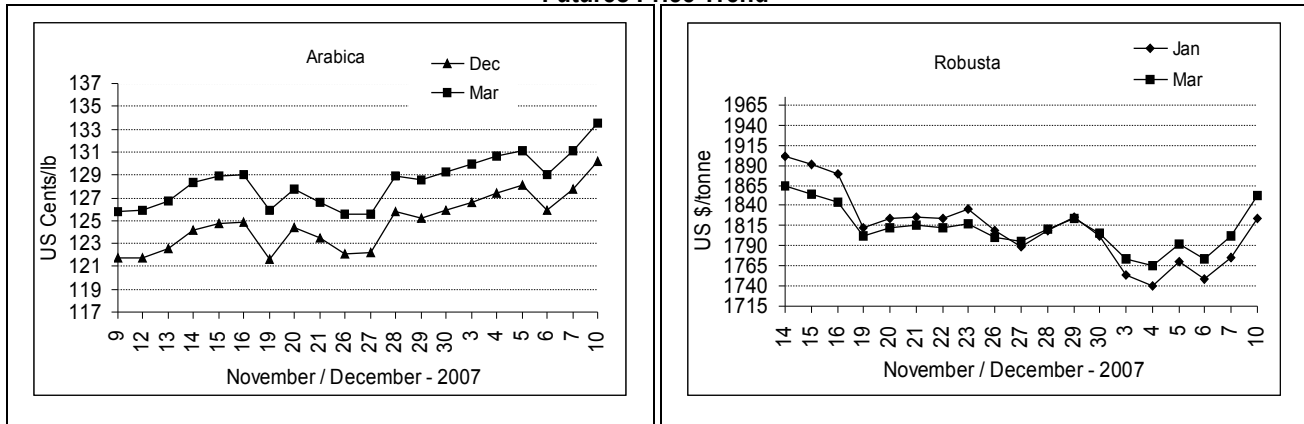
COFFEE BOARD: BANGALORE
Daily Coffee Market Report Tuesday December 11, 2007

Futures Prices 10.12.2007					
ICE (New York) US cents / lb			London US \$ / tonne and cents / lb in brackets		
Month	Price	Prev. Price	Month	Price	Prev. Price
Dec – 2007	130.20	127.75	Jan – 2008	1824 (82.74)	1776 (80.56)
Mar – 2008	133.50	131.15	Mar – 2008	1853 (84.05)	1802 (81.74)
May – 2008	136.10	133.70	May – 2008	1874 (85.00)	1820 (82.55)

ICO Daily weighted average price on 07.12.2007 and previous price in brackets (US cents/lb)

Other Mild Arabica	Robusta	Exchange Rate Rs./ US \$
135.40 (133.87)	87.96 (87.76)	39.38

Futures Price Trend



Market Analysis

ICE pit-traded arabica coffee futures raced to one-month highs on Monday as funds bought, forcing shorts to cover when the market scaled a recent chart barrier. Buyers were spurred by several constructive components in a world coffee report from the U.S. Dept. of Agriculture, released late Friday. ICE pit March closed up 235 points at \$1.3350 a pound. London robusta futures closed higher on speculative buying as the market continued to recover from considerable losses in earlier sessions. Benchmark January added \$48 to close at \$1824 while March ended \$51 higher at \$1853.

Global: USDA, citing low inventories in Brazil, expects world coffee stocks held in exporting countries to shrink to only 18.3 million bags in 2007-08, the lowest in the agency's records dating back to 1960-61. The world consumption during 2006-07 is estimated to increase by 9% to 131.1 million bags.

Differentials:	Ar. Plant. A	Ar.Chy.AB	Rob.Pmt.AB	Rob.Chy.AB
	NY +3	NY -15	LIFFE +530	LIFFE +130

ICTA Auction Prices Rs/Kg as on 06.12.2007

Grade	MNEB/AA	PB	A	AB	B	C	BBB
Arabica Plantation	115.64	135.32	110.90	----	103.70	99.12	82.06
Arabica Cherry	107.00	97.00	----	102.00	----	86.00	75.00
	RKR	PB	AA	AB	C	BBB	
Robusta Parchment	----	----	----	----	86.00	----	
Robusta Cherry	----	79.00	81.74	79.98	76.68	74.00	

Raw Coffee Price (Karnataka) as on 10.12.2007 in Rs./50 kg

Ar.Pmt	Ar.Chy	Rob.Pmt	Rob.Chy
4175 - 4300	2175 - 2300	3725 - 4000	1800 - 1925

Export update: From 1st January to December 10, 2007 (in metric tonnes)

INDIAN COFFEE		Ar.Pmt	Ar.Chy	Rob.Pmt	Rob.Chy	Instant	Total
1	Provisional exports (Indian coffee)	29790	11361	20548	87363	47021	196083
2	Provisional exports corresponding period last year	46583	10739	24368	102286	24425	208401
3	Provisional re-exports	---	---	---	---	16538	16538
4	Provisional re-exports corresponding period last year	---	---	---	---	30651	30651
5	Total provisional exports (1+3)	29790	11361	20548	87363	63559	212621
6	Total provisional exports corresponding period last year (2+4)	46583	10739	24368	102286	55076	239052

Disclaimer: The Board neither guarantees the accuracy of the information nor accept any liability whatsoever for any direct or consequential loss arising from the use of this report.