

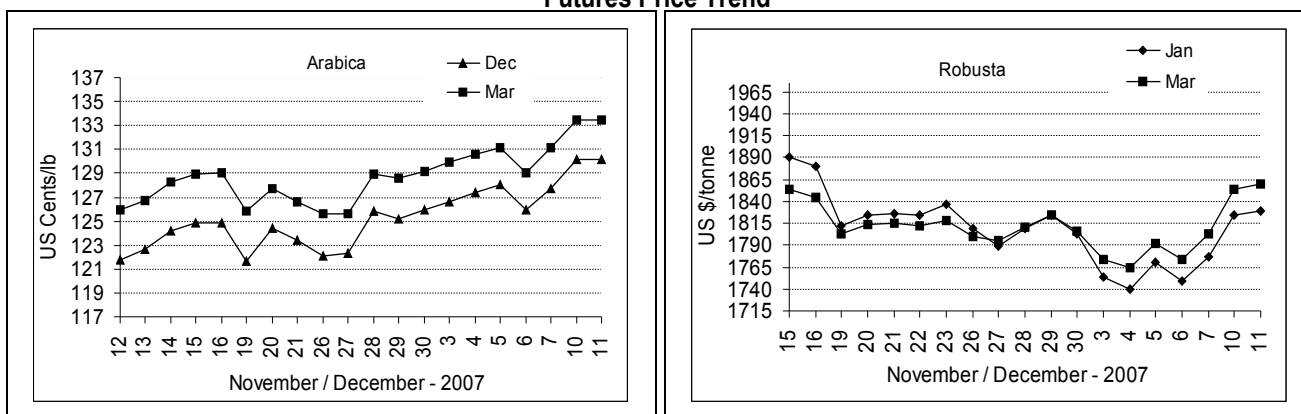
**COFFEE BOARD: BANGALORE**  
**Daily Coffee Market Report Wednesday December 12, 2007**

Futures Prices 11.12.2007					
ICE (New York) US cents / lb			London US \$ / tonne and cents / lb in brackets		
Month	Price	Prev. Price	Month	Price	Prev. Price
Dec – 2007	130.10	130.20	Jan – 2008	1829 (82.96)	1824 (82.74)
Mar – 2008	133.50	133.50	Mar – 2008	1859 (84.32)	1853 (84.05)
May – 2008	136.05	136.10	May – 2008	1880 (85.28)	1874 (85.00)

**ICO Daily weighted average price on 10.12.2007 and previous price in brackets (US cents/lb)**

Other Mild Arabica	Robusta	Exchange Rate Rs./ US \$
137.41 (135.40)	91.38 (87.96)	39.36

**Futures Price Trend**



**Market Analysis**

ICE pit-traded arabica coffee futures ended narrowly mixed on Tuesday after an initial, speculative-led surge to one-month highs crumbled and profits were taken. Origins were light sellers and volume was fairly light however. ICE pit March closed unchanged at \$1.3350 a pound, with May down 5 points at \$1.3605. LIFFE robusta futures ended marginally higher on some speculative support. Benchmark January ended \$5 higher at \$1829 while March added \$6 to close at \$1829.

Differentials:	Ar. Plant. A	Ar.Chy.AB	Rob.Pmt.AB	Rob.Chy.AB
	NY +3	NY -15	LIFFE +530	LIFFE +130

**ICTA Auction Prices Rs/Kg as on 06.12.2007**

Grade	MNEB/AA	PB	A	AB	B	C	BBB
Arabica Plantation	115.64	135.32	110.90	----	103.70	99.12	82.06
Arabica Cherry	107.00	97.00	----	102.00	----	86.00	75.00
	RKR	PB	AA	AB	C	BBB	
Robusta Parchment	----	----	----	----	86.00	----	
Robusta Cherry	----	79.00	81.74	79.98	76.68	74.00	

**Raw Coffee Price (Karnataka) as on 11.12.2007 in Rs./50 kg**

Ar.Pmt	Ar.Chy	Rob.Pmt	Rob.Chy
4225 - 4500	2325 - 2500	3825 - 4050	1875 - 1925

**Export update: From 1<sup>st</sup> January to December 11, 2007 (in metric tonnes)**

INDIAN COFFEE		Ar.Pmt	Ar.Chy	Rob.Pmt	Rob.Chy	Instant	Total
1	Provisional exports (Indian coffee)	29821	11436	20548	87618	47127	196550
2	Provisional exports corresponding period last year	46602	10854	24560	102751	24633	209400
3	Provisional re-exports	---	---	---	---	16550	16550
4	Provisional re-exports corresponding period last year	---	---	---	---	30711	30711
5	Total provisional exports (1+3)	29821	11436	20548	87618	63677	213100
6	Total provisional exports corresponding period last year (2+4)	46602	10854	24560	102751	55344	240111

Disclaimer: The Board neither guarantees the accuracy of the information nor accept any liability whatsoever for any direct or consequential loss arising from the use of this report.