

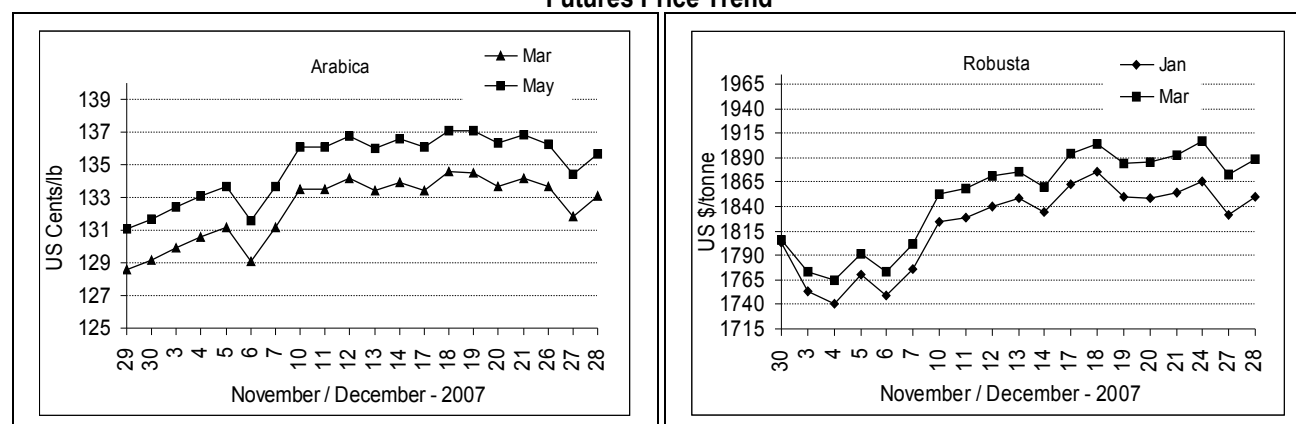
COFFEE BOARD: BANGALORE
Daily Coffee Market Report Saturday December 29, 2007

Futures Prices 28.12.2007					
ICE (New York) US cents / lb			London US \$ / tonne and cents / lb in brackets		
Month	Price	Prev. Price	Month	Price	Prev. Price
Mar - 2007	133.10	131.80	Jan - 2008	1850 (83.91)	1831 (83.05)
May - 2008	135.65	134.40	Mar - 2008	1889 (85.68)	1872 (84.91)
Jul - 2008	138.15	136.90	May - 2008	1912 (86.73)	1894 (85.91)

ICO Daily weighted average price on 21.12.2007 and previous price in brackets (US cents/lb)

Other Mild Arabica	Robusta	Exchange Rate Rs./ US \$
138.93 (138.72)	93.54 (93.56)	39.44

Futures Price Trend



Market Analysis

ICE pit-traded arabica coffee futures ended at modestly firmer levels on Friday amid speculator buying and short-covering in the wake of two down days. ICE pit March closed up 130 points at \$1.3310 a pound. LIFFE Jan settled up \$19 at \$1850/tonne while Mar settled up \$17 at \$1889/tonne.

Differentials:	Ar. Plant. A	Ar.Chy.AB	Rob.Pmt.AB	Rob.Chy.AB
	NY +3	NY -15	LIFFE +530	LIFFE +130

ICTA Auction Prices Rs/Kg as on 13.12.2007

Grade	MNEB/AA	PB	A	AB	B	C	BBB
Arabica Plantation	---	134.58	110.00	---	102.02	98.00	---
Arabica Cherry	---	---	---	---	---	---	---
	RKR	PB	AA	AB	C	BBB	
Robusta Parchment	---	---	---	---	---	---	
Robusta Cherry	---	---	80.00	---	---	74.22	

Raw Coffee Price (Karnataka) as on 29.12.2007 in Rs./50 kg

Ar.Pmt	Ar.Chy	Rob.Pmt	Rob.Chy
4500 - 4600	2550 - 2600	3750 - 4050	1875 - 1925

Export update: From 1st January to December 28, 2007 (in metric tonnes)

INDIAN COFFEE		Ar.Pmt	Ar.Chy	Rob.Pmt	Rob.Chy	Instant	Total
1	Provisional exports (Indian coffee)	30206	11820	20775	90576	50719	204096
2	Provisional exports corresponding period last year	47919	11435	25151	105979	27320	217804
3	Provisional re-exports	--	---	--	--	18628	18628
4	Provisional re-exports corresponding period last year	--	--	--	--	32739	32739
5	Total provisional exports (1+3)	30206	11820	20775	90576	69347	222724
6	Total provisional exports corresponding period last year (2+4)	47919	11435	25151	105979	60059	250543

Disclaimer: The Board neither guarantees the accuracy of the information nor accept any liability whatsoever for any direct or consequential loss arising from the use of this report.