

COFFEE BOARD: BANGALORE
Daily Coffee Market Report Wednesday February 20, 2008

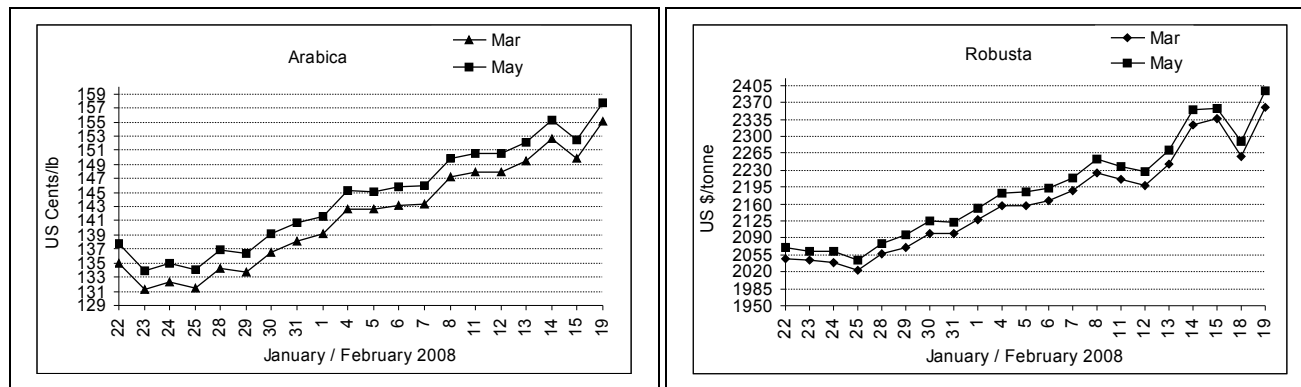
Futures Prices 19.02.2008					
ICE (New York) US cents / lb			London US \$ / tonne and cents / lb in brackets		
Month	Price	Prev. Price	Month	Price	Prev. Price
Mar – 2008	155.05	Holiday	Mar – 2008	2360 (107.05)	2257 (102.38)
May – 2008	157.75		May – 2008	2394 (108.59)	2290 (103.87)
July – 2008	159.85		July – 2008	2411 (109.36)	2311 (104.83)

2318

ICO Daily weighted average price on 18.02.2008 and previous price in brackets (US cents/lb)

Other Mild Arabica	Robusta	Exchange Rate Rs./ US \$
154.85 (156.65)	111.81 (114.77)	39.87

Futures Price Trend



Market Analysis

ICE Pit-traded arabica coffee futures climbed on Tuesday as the market retraced Friday's losses with speculative buying and short covering, but stayed below recent contract highs. March-May rolling was busy before notices start Wednesday night. ICE pit March settled up 520 points at \$1.5505 a pound, with May gaining 535 points to \$1.5775. The CRB Index vaulted to a record high as a number of commodities rallied. London robusta futures surged, yet stayed below Friday's 11-year highs. ICE May robusta coffee stood at \$1.07 a pound in late screen action. LIFFE Mar settled up \$103 at \$2360 and May settled up \$104 at \$2394/tonne.

Differentials:	Ar. Plant. A	Ar.Chy.AB	Rob.Pmt.AB	Rob.Chy.AB
	NY +0	NY -15	LIFFE +530	LIFFE +50

ICTA Auction Prices Rs/Kg as on 14.02.2008

Grade	MNEB/AA	PB	A	AB	B	C	BBB
Arabica Plantation	129.26	131.40	128.00	128.00	120.50	113.00	94.90
Arabica Cherry	112.60	108.00		---	---	---	---
	RKR	PB	AA	AB		C	BBB
Robusta Parchment	--	---	---	---	---	---	---
Robusta Cherry	---	---	---	---	---	89.00	86.00

Raw Coffee Price (Karnataka) as on 19.02.2008 in Rs./50 kg

Ar.Pmt	Ar.Chy	Rob.Pmt	Rob.Chy
4975 - 5025	2700 - 2775	4350 - 4400	2200 - 2225

Export update: From 1st January to February 19, 2008 (in metric tonnes)

	INDIAN COFFEE	Ar.Pmt	Ar.Chy	Rob.Pmt	Rob.Chy	Instant	Total
1	Provisional exports (Indian coffee)	5558	1816	617	10314	5469	23774
2	Provisional exports corresponding period last year	4016	2485	1016	8847	6788	23152
3	Provisional re-exports					4342	4342
4	Provisional re-exports corresponding period last year					3316	3316
5	Total provisional exports (1+3)	5558	1816	617	10314	9811	28116
6	Total provisional exports corresponding period last year (2+4)	4016	2485	1016	8847	10104	26468

Disclaimer: The Board neither guarantees the accuracy of the information nor accept any liability whatsoever for any direct or consequential loss arising from the use of this report..