

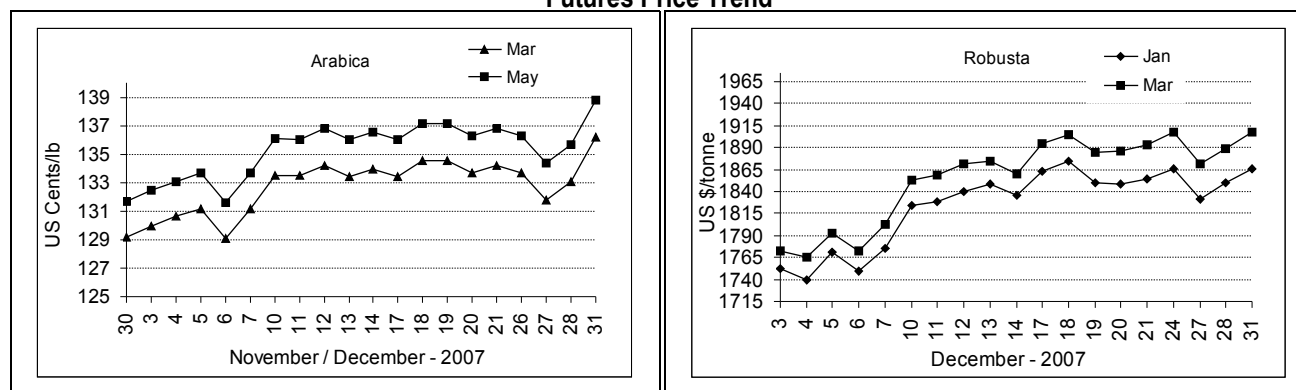
COFFEE BOARD: BANGALORE
Daily Coffee Market Report Wednesday January 02, 2008

Futures Prices 01.01.2008					
ICE (New York) US cents / lb			London US \$ / tonne and cents / lb in brackets		
Month	Price	Prev. Price	Month	Price	Prev. Price
Mar - 2007	Holiday	136.20	Jan - 2008	Holiday	1866 (84.64)
May - 2008		138.75	Mar - 2008		1907 (86.50)
Jul - 2008		141.25	May - 2008		1927 (87.41)

ICO Daily weighted average price on 21.12.2007 and previous price in brackets (US cents/lb)

Other Mild Arabica	Robusta	Exchange Rate Rs./ US \$
138.93 (138.72)	93.54 (93.56)	39.42

Futures Price Trend



Market Analysis

US coffee market and LIFFE coffee market were closed on Wednesday for New Year's day.

Differentials:	Ar. Plant. A	Ar.Chy.AB	Rob.Pmt.AB	Rob.Chy.AB
	NY +3	NY -15	LIFFE +530	LIFFE +130

ICTA Auction Prices Rs/Kg as on 13.12.2007

Grade	MNEB/AA	PB	A	AB	B	C	BBB
Arabica Plantation	---	134.58	110.00	---	102.02	98.00	---
Arabica Cherry	---	---	---	---	---	---	---
	RKR	PB	AA	AB	C	BBB	
Robusta Parchment	---	---	---	---	---	---	---
Robusta Cherry	---	---	80.00	---	---	74.22	

Raw Coffee Price (Karnataka) as on 01.01.2008 in Rs./50 kg

Ar.Pmt	Ar.Chy	Rob.Pmt	Rob.Chy
4500 - 4600	2550 - 2600	3750 - 4050	1875 - 1925

Export update: From 1st January to January 01, 2008 (in metric tonnes)

INDIAN COFFEE		Ar.Pmt	Ar.Chy	Rob.Pmt	Rob.Chy	Instant	Total
1	Provisional exports (Indian coffee)	0	0	0	35	196	231
2	Provisional exports corresponding period last year	0	0	0	36	27	63
3	Provisional re-exports					22	22
4	Provisional re-exports corresponding period last year					239	239
5	Total provisional exports (1+3)	0	0	0	35	218	253
6	Total provisional exports corresponding period last year (2+4)	0	0	0	36	266	302

Disclaimer: The Board neither guarantees the accuracy of the information nor accept any liability whatsoever for any direct or consequential loss arising from the use of this report.