

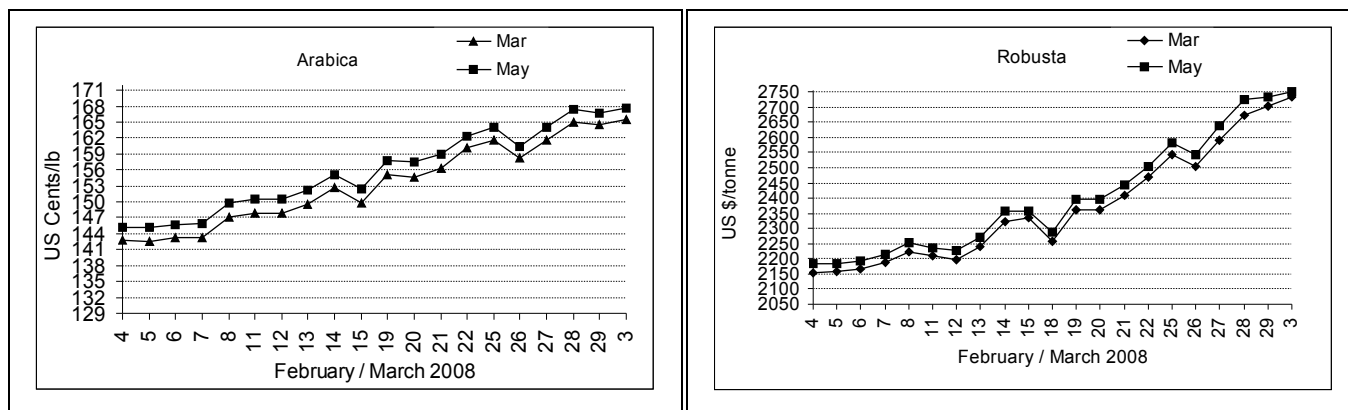
**COFFEE BOARD: BANGALORE**  
**Daily Coffee Market Report Tuesday March 04, 2008**

Futures Prices 03.03.2008					
ICE (New York) US cents / lb			London US \$ / tonne and cents / lb in brackets		
Month	Price	Prev. Price	Month	Price	Prev. Price
Mar – 2008	165.40	164.60	Mar – 2008	2732 (123.92)	2703 (122.61)
May – 2008	167.55	166.80	May – 2008	2750 (124.74)	2735 (124.06)
July – 2008	169.85	169.05	July – 2008	2766 (125.46)	2757 (125.06)

**ICO Daily weighted average price on 29.02.2008 and previous price in brackets (US cents/lb)**

Other Mild Arabica	Robusta	Exchange Rate Rs./ US \$
170.31 (169.26)	131.64 (131.54)	40.26

**Futures Price Trend**



**Market Analysis**

ICE Arabica coffee futures settled higher on Monday, erasing morning losses as funds bought and shorts covered in the first day of the exchange's all-electronic futures trading. ICE May arabica coffee settled up 75 points at \$1.6755 a pound, with July gaining 80 points. The CRB Index touched another all-time high Monday. ICE May robusta coffee stood at \$1.2360 a pound in late action. London robustas futures stayed below recent 12 1/2-year highs. LIFFE Mar settled up \$29 at \$2732/tonne while May settled up \$15 at \$2750/tonne.

**Global:** green coffee prices have continued to rise sharply over the past three weeks. This past week, both the New York 'C' arabica and London robusta markets have traded at more than 20 cents per pound. Procter & Gamble Co. (PG) hiked list prices Monday for Folgers ground coffee by 20 cents per 10.5- to 13-ounce can and instant coffee price by 24 cents per 8-ounce jar, or 5%, after raising prices on Feb. 11., and also increased prices for Dunkin' Donuts retailers.

Differentials:	Ar. Plant. A	Ar.Chy.AB	Rob.Pmt.AB	Rob.Chy.AB
	NY -3	NY -22	LIFFE +500	LIFFE +30

**ICTA Auction Prices Rs/Kg as on 28.02.2008**

Grade	MNEB/AA	PB	A	AB	B	C	BBB
Arabica Plantation	142.06	137.56	140.22	140.22	132.40	124.00	106.00
Arabica Cherry	118.00	115.34		117.00	---	104.74	92.00
	RKR	PB	AA	AB		C	BBB
Robusta Parchment	--	---	---	---	---	---	---
Robusta Cherry	110.00	101.06	110.00	108.00	108.00	98.00	---

**Raw Coffee Price (Karnataka) as on 03.03.2008 in Rs./50 kg**

Ar.Pmt	Ar.Chy	Rob.Pmt	Rob.Chy
5400 - 5475	2875 - 2950	4750 - 4800	2425 - 2525

**Export update:** From 1<sup>st</sup> January to March 03, 2008 (in metric tonnes)

INDIAN COFFEE		Ar.Pmt	Ar.Chy	Rob.Pmt	Rob.Chy	Instant	Total
1	Provisional exports (Indian coffee)	8444	2400	1437	13539	6273	32093
2	Provisional exports corresponding period last year	5962	3068	1888	16895	8327	36140
3	Provisional re-exports					5806	5806
4	Provisional re-exports corresponding period last year					3946	3946
5	Total provisional exports (1+3)	<b>8444</b>	<b>2400</b>	<b>1437</b>	<b>13539</b>	<b>12079</b>	<b>37899</b>
6	Total provisional exports corresponding period last year (2+4)	<b>5962</b>	<b>3068</b>	<b>1888</b>	<b>16895</b>	<b>12273</b>	<b>40086</b>

Disclaimer: The Board neither guarantees the accuracy of the information nor accept any liability whatsoever for any direct or consequential loss arising from the use of this report.