

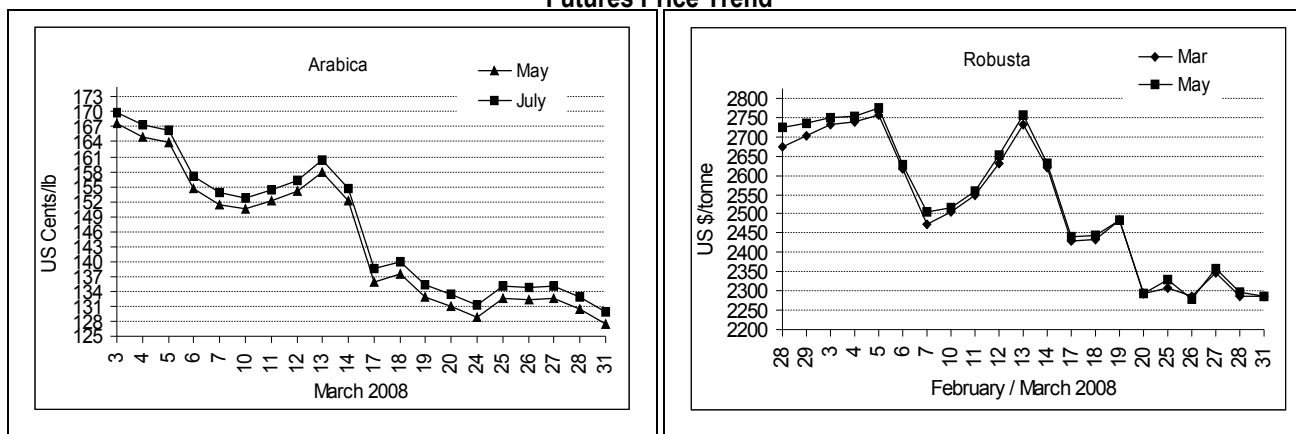
COFFEE BOARD: BANGALORE
Daily Coffee Market Report Tuesday April 01, 2008

Futures Prices 31.03.2008					
ICE (New York) US cents / lb			London US \$ / tonne and cents / lb in brackets		
Month	Price	Prev. Price	Month	Price	Prev. Price
May - 2008	127.40	130.40	Mar - 2008	2288 (103.78)	2288 (103.78)
July - 2008	129.95	132.95	May - 2008	2287 (103.74)	2298 (104.24)
Sep - 2008	132.45	135.40	July - 2008	2273 (103.10)	2295 (104.10)

ICO Daily weighted average price on 28.03.2008 and previous price in brackets (US cents/lb)

Other Mild Arabica	Robusta	Exchange Rate Rs./ US \$
137.26 (138.58)	114.50 (114.99)	39.97

Futures Price Trend



Market Analysis

ICE arabica coffee futures sank to one and half-week lows on Monday as speculators liquidated and sell stops were sparked in brisk volume as other commodities and the CRB Index decline. The market extended losses a bit in after-hours activity. ICE May arabica coffee settled down 300 points at \$1.2740 a pound, with July also off 300 points. ICE May robusta coffee settled 15 points higher at \$1.0375 a pound. LIFFE settled unchanged at \$2288/tonne while May settled down \$11 at \$2287/tonne.

Differentials:	Ar. Plant. A	Ar.Chy.AB	Rob.Pmt.AB	Rob.Chy.AB
	NY +0	NY -22	LIFFE +450	LIFFE +70

ICTA Auction Prices Rs/Kg as on 27.03.2008

Grade	MNEB/AA	PB	A	AB	B	C	BBB
Arabica Plantation	122.84	119.14	---	---	---	105.00	---
Arabica Cherry	---	102.00	---	104.12	---	---	84.50
	RKR	PB	AA	AB		C	BBB
Robusta Parchment	116.40	109.00	116.40	114	---	---	85.00
Robusta Cherry	---	---	---	---	---	---	86.00

Raw Coffee Price (Karnataka) as on 31.03.2008 in Rs./50 kg

Ar.Pmt	Ar.Chy	Rob.Pmt	Rob.Chy
4200 - 4400	2100 - 2150	4000 - 4250	2100 - 2150

Export update: From 1st January to March 31, 2008 (in metric tonnes)

INDIAN COFFEE		Ar.Pmt	Ar.Chy	Rob.Pmt	Rob.Chy	Instant	Total
1	Provisional exports (Indian coffee)	15357	4063	4972	27473	9342	61207
2	Provisional exports corresponding period last year	9825	4683	5244	29110	12965	61827
3	Provisional re-exports					11466	11466
4	Provisional re-exports corresponding period last year					6006	6006
5	Total provisional exports (1+3)	15357	4063	4972	27473	20808	72673
6	Total provisional exports corresponding period last year (2+4)	9825	4683	5244	29110	18971	67833

Disclaimer: The Board neither guarantees the accuracy of the information nor accept any liability whatsoever for any direct or consequential loss arising from the use of this report.