

**COFFEE BOARD: BANGALORE**  
**Daily Coffee Market Report Friday November 02, 2007**

**Futures Prices 01.11.2007**

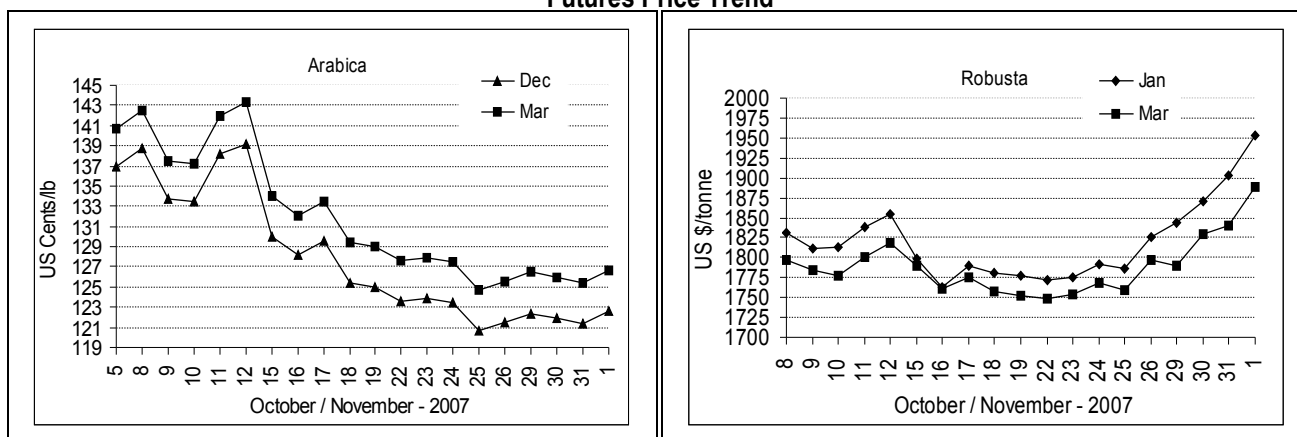
New York US cents / lb			London US \$ / tonne and cents / lb in brackets		
Month	Price	Prev. Price	Month	Price	Prev. Price
Dec – 2007	122.60	121.35	Jan – 2008	1954 (88.63)	1903 (86.32)
Mar – 2008	126.65	125.45	Mar – 2008	1889 (85.68)	1841 (83.51)
May – 2008	129.10	127.90	May – 2008	1889 (85.68)	1844 (83.64)

**ICO Indicator Prices of 31.10.2007 and previous price in brackets (US cents/lb)**

Arabica (N.Y)	Robusta (N.Y)
126.81 (127.19)	93.25 (91.75)

Exchange Rate Rs./ US \$
39.32

**Futures Price Trend**



**Market Analysis**

ICE pit-traded arabica coffee futures advanced on Thursday but pared a morning climb that was spurred by an ongoing rally in the London robustas. Buying on ICE subsided in part because of views that Brazil's crop, which is flowering and forming fruit, is developing well now for the most part. ICE pit December closed 125 points higher at \$1.2260 a pound. London robusta futures continued to set contract highs on Thursday – first notice day for November delivery. LIFFE Jan settled up \$51 at \$1954/tonne while Mar settled up \$48 at \$1889/tonne.

Differentials:	Ar. Plant. A	Ar.Chy.AB	Rob.Pmt.AB	Rob.Chy.AB
	NY +2	NY –15	LIFFE +530	LIFFE +135

**ICTA Auction Prices Rs/Kg as on 25.10.2007**

Grade	MNEB/AA	PB	A	AB	B	C	BBB
Arabica Plantation	114.84	136.58	114.00	---	104.00	98.78	86.06
Arabica Cherry	102.00	---	---	---	---	80.00	---
	RKR	PB	AA	AB	C	BBB	
Robusta Parchment	---	---	---	---	---	---	
Robusta Cherry	---	77.30	78.94	79.88	---	74.00	

**Raw Coffee Price (Karnataka) as on 31.10.2007 in Rs./50 kg**

Ar.Pmt	Ar.Chy	Rob.Pmt	Rob.Chy
4000 - 4185	2000 - 2225	3725 - 3975	1875 - 1900

**Export update: From 1<sup>st</sup> January to November 01, 2007 (in metric tonnes)**

INDIAN COFFEE		Ar.Pmt	Ar.Chy	Rob.Pmt	Rob.Chy	Instant	Total
1	Provisional exports (Indian coffee)	28686	9931	19071	79761	42656	180105
2	Provisional exports corresponding period last year	45393	9694	22649	92055	20929	190720
3	Provisional re-exports					12517	12517
4	Provisional re-exports corresponding period last year					28214	28214
5	Total provisional exports (1+3)	28686	9931	19071	79761	55173	192622
6	Total provisional exports corresponding period last year (2+4)	45393	9694	22649	92055	49143	218934

Disclaimer: The Board neither guarantees the accuracy of the information nor accept any liability whatsoever for any direct or consequential loss arising from the use of this report.