

**COFFEE BOARD: BANGALORE**  
**Daily Coffee Market Report Saturday November 03, 2007**

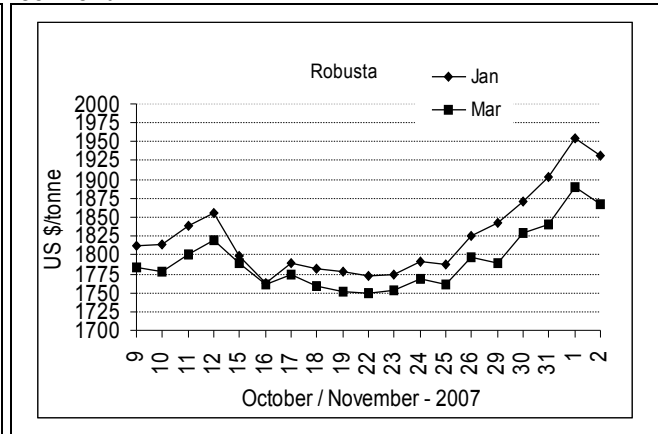
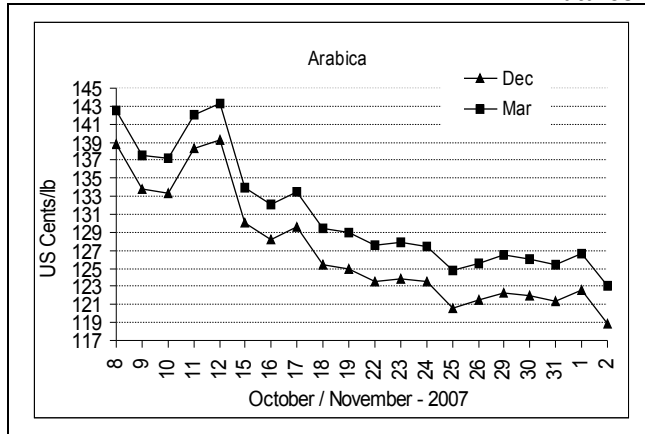
Futures Prices 02.11.2007					
New York US cents / lb			London US \$ / tonne and cents / lb in brackets		
Month	Price	Prev. Price	Month	Price	Prev. Price
Dec – 2007	118.90	122.60	Jan – 2008	1931 (87.59)	1954 (88.63)
Mar – 2008	123.05	126.65	Mar – 2008	1868 (84.73)	1889 (85.68)
May – 2008	125.60	129.10	May – 2008	1868 (84.73)	1889 (85.68)

**ICO Indicator Prices of 01.11.2007 and previous price in brackets (US cents/lb)**

Arabica (N.Y)	Robusta (N.Y)
131.13 (126.81)	95.75 (93.25)

Exchange Rate Rs./ US \$
39.37

**Futures Price Trend**



**Market Analysis**

ICE pit-traded arabica coffee futures tumbled to seven-week lows on Friday before roaster buying curbed the fund-led rout, while December-March spreading was active. The market has retreated in recent weeks as ample rainfall ended a dry spell in Brazil, allowing a mostly successful spring blossom and early fruit formation. ICE pit December closed 370 points lower at \$1.1890 a pound. Deliveries against London November totaled 3,258 lots Friday, of which 100 lots were retenders, bringing deliveries over two days to 10,069 lots – of which 8,963 lots were from Vietnam. LIFFE Jan settled down \$23 at \$1931/tonne while Mar settled down \$21 at \$1868/tonne.

Differentials:	Ar. Plant. A	Ar.Chy.AB	Rob.Pmt.AB	Rob.Chy.AB
	NY +2	NY -15	LIFFE +530	LIFFE +135

**ICTA Auction Prices Rs/Kg as on 25.10.2007**

Grade	MNEB/AA	PB	A	AB	B	C	BBB
Arabica Plantation	114.84	136.58	114.00	---	104.00	98.78	86.06
Arabica Cherry	102.00	---	---	---	---	80.00	---
	RKR	PB	AA	AB	C	BBB	
Robusta Parchment	---	---	---	---	---	---	
Robusta Cherry	---	77.30	78.94	79.88	---	74.00	

**Raw Coffee Price (Karnataka) as on 01.11.2007 in Rs./50 kg**

Ar.Pmt	Ar.Chy	Rob.Pmt	Rob.Chy
4000 - 4185	2000 - 2225	3725 - 3975	1875 - 1900

**Export update: From 1<sup>st</sup> January to November 02, 2007 (in metric tonnes)**

INDIAN COFFEE		Ar.Pmt	Ar.Chy	Rob.Pmt	Rob.Chy	Instant	Total
1	Provisional exports (Indian coffee)	28704	10027	19152	79933	42705	180521
2	Provisional exports corresponding period last year	45469	9694	22726	92603	20955	191447
3	Provisional re-exports					12570	12570
4	Provisional re-exports corresponding period last year					28214	28214
5	Total provisional exports (1+3)	28704	10027	19152	79933	55275	193091
6	Total provisional exports corresponding period last year (2+4)	45469	9694	22726	92603	49169	219661

Disclaimer: The Board neither guarantees the accuracy of the information nor accept any liability whatsoever for any direct or consequential loss arising from the use of this report.