

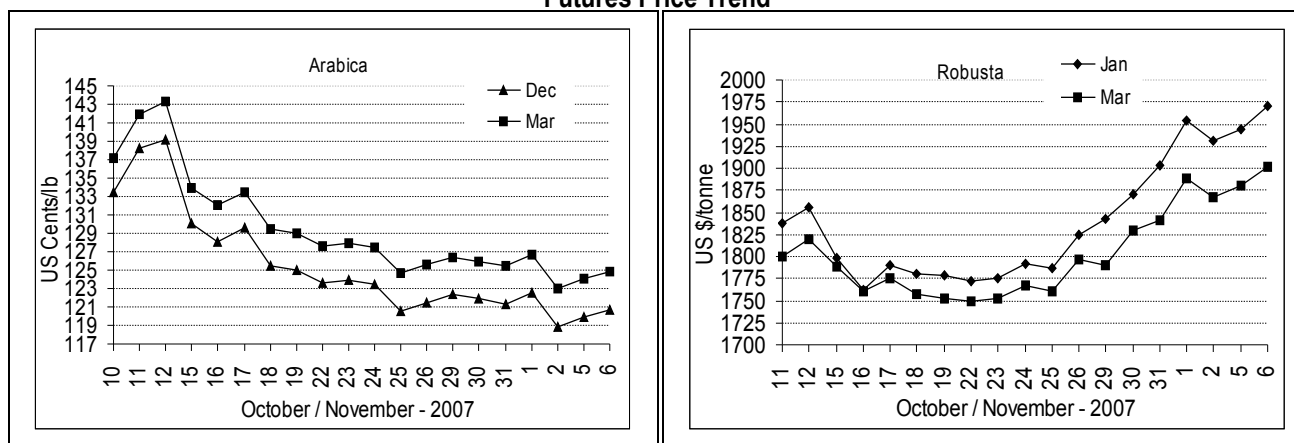
COFFEE BOARD: BANGALORE
Daily Coffee Market Report Wednesday November 07, 2007

Futures Prices 06.11.2007					
New York US cents / lb			London US \$ / tonne and cents / lb in brackets		
Month	Price	Prev. Price	Month	Price	Prev. Price
Dec – 2007	120.70	119.95	Jan – 2008	1970 (89.36)	1945 (88.22)
Mar – 2008	124.85	124.10	Mar – 2008	1902 (86.27)	1880 (85.28)
May – 2008	127.45	126.65	May – 2008	1906 (86.45)	1884 (85.46)

ICO Indicator Prices of 05.11.2007 and previous price in brackets (US cents/lb)

Arabica (N.Y)	Robusta (N.Y)	Exchange Rate Rs./ US \$
128.13 (127.38)	95.25 (94.50)	39.29

Futures Price Trend



Market Analysis

ICE pit-traded arabica coffee futures ended firmer on Tuesday after reaching two-day highs initially as the London robustas sped to ten-year highs. Funds rolled out of ICE December longs, however, and into March, with two weeks until notices start, keeping gains in check. ICE pit December closed 75 points higher at \$1.2070 a pound. Funds and others this week keep bidding up the London robusta market. Rain in Vietnam continues to delay picking and harvesting of the new crop. LIFFE Jan settled up \$25 at \$1970/tonne while Mar settled up \$22 at \$1902/tonne.

Differentials:	Ar. Plant. A	Ar.Chy.AB	Rob.Pmt.AB	Rob.Chy.AB
	NY +2	NY -15	LIFFE +530	LIFFE +135

ICTA Auction Prices Rs/Kg as on 25.10.2007

Grade	MNEB/AA	PB	A	AB	B	C	BBB
Arabica Plantation	114.84	136.58	114.00	---	104.00	98.78	86.06
Arabica Cherry	102.00	---	---	---	---	80.00	---
	RKR	PB	AA	AB	C	BBB	
Robusta Parchment	---	---	---	---	---	---	
Robusta Cherry	---	77.30	78.94	79.88	---	74.00	

Raw Coffee Price (Karnataka) as on 05.11.2007 in Rs./50 kg

Ar.Pmt	Ar.Chy	Rob.Pmt	Rob.Chy
4100 - 4150	2050 - 2250	3800 - 4050	1900 - 1925

Export update: From 1st January to November 06, 2007 (in metric tonnes)

INDIAN COFFEE		Ar.Pmt	Ar.Chy	Rob.Pmt	Rob.Chy	Instant	Total
1	Provisional exports (Indian coffee)	28912	10027	19399	80431	43782	182551
2	Provisional exports corresponding period last year	45502	9694	22838	93837	21190	193061
3	Provisional re-exports					12663	12663
4	Provisional re-exports corresponding period last year					28427	28427
5	Total provisional exports (1+3)	28912	10027	19399	80431	56445	195214
6	Total provisional exports corresponding period last year (2+4)	45502	9694	22838	93837	49617	221488

Disclaimer: The Board neither guarantees the accuracy of the information nor accept any liability whatsoever for any direct or consequential loss arising from the use of this report.