

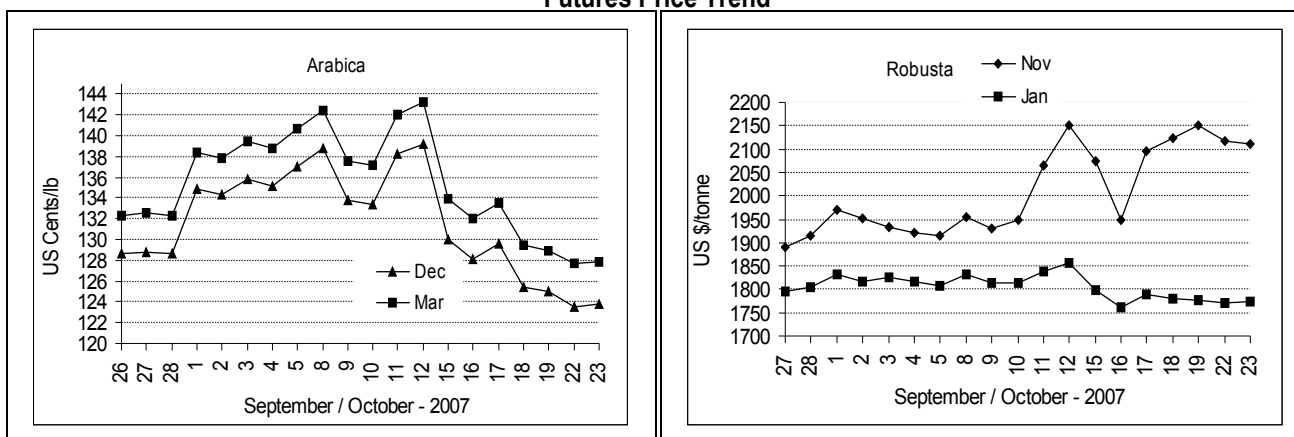
**COFFEE BOARD: BANGALORE**  
**Daily Coffee Market Report Wednesday October 24, 2007**

Futures Prices 23.10.2007					
New York US cents / lb			London US \$ / tonne and cents / lb in brackets		
Month	Price	Prev. Price	Month	Price	Prev. Price
Dec – 2007	123.85	123.55	Nov – 2007	2112 (95.80)	2117 (96.03)
Mar – 2008	127.90	127.65	Jan – 2008	1775 (80.51)	1772 (80.38)
May – 2008	130.15	129.90	Mar – 2008	1753 (79.51)	1749 (79.33)

**ICO Indicator Prices of 22.10.2007 and previous price in brackets (US cents/lb)**

Arabica (N.Y)	Robusta (N.Y)	Exchange Rate Rs./ US \$
128.63 (130.06)	102.25 (104.75)	39.69

**Futures Price Trend**



**Market Analysis**

ICE pit-traded arabica coffee futures ended higher on Tuesday recovering from a dip but staying in Monday's range as shorts covered. December closed 30 points higher at \$1.2385 a pound. LIFFE Jan settled up \$3 at \$1777/tonne while Mar settled up \$4 at \$1753/tonne.

**Global:** Somar predicts Minas Gerais and northern Sao Paulo will have substantial rains this week. Southern Minas, Brazil's top coffee region, was slated for downpours Tuesday. Prolonged showers in Vietnam's central highlands could delay the harvest a bit according to reports.

Differentials:	Ar. Plant. A	Ar.Chy.AB	Rob.Pmt.AB	Rob.Chy.AB
	NY +2	NY -15	LIFFE +530	LIFFE +135

**ICTA Auction Prices Rs/Kg as on 11.10.2007**

Grade	MNEB/AA	PB	A	AB	B	C	BBB
Arabica Plantation	116.90	134.40	116.00	---	106.00	---	77.20
Arabica Cherry	---	96.00	---	---	---	---	---
	RKR	PB	AA	AB	C	BBB	
Robusta Parchment	---	---	---	---	---	74.00	
Robusta Cherry	---	78.00	80.00	---	76.00	75.70	

**Raw Coffee Price (Karnataka) as on 23.10.2007 in Rs./50 kg**

Ar.Pmt	Ar.Chy	Rob.Pmt	Rob.Chy
4025 - 4200	2000 - 2250	3700 - 3950	1775 - 1890

**Export update: From 1<sup>st</sup> January to October 23, 2007 (in metric tonnes)**

INDIAN COFFEE		Ar.Pmt	Ar.Chy	Rob.Pmt	Rob.Chy	Instant	Total
1	Provisional exports (Indian coffee)	28219	9731	18662	78361	42129	177102
2	Provisional exports corresponding period last year	45169	9632	21906	90655	20079	187441
3	Provisional re-exports					11324	11324
4	Provisional re-exports corresponding period last year					27207	27207
5	Total provisional exports (1+3)	<b>28219</b>	<b>9731</b>	<b>18662</b>	<b>78361</b>	<b>53453</b>	<b>188426</b>
6	Total provisional exports corresponding period last year (2+4)	<b>45169</b>	<b>9632</b>	<b>21906</b>	<b>90655</b>	<b>47286</b>	<b>214648</b>