

COFFEE BOARD: BANGALORE
Daily Coffee Market Report Thursday October 25, 2007

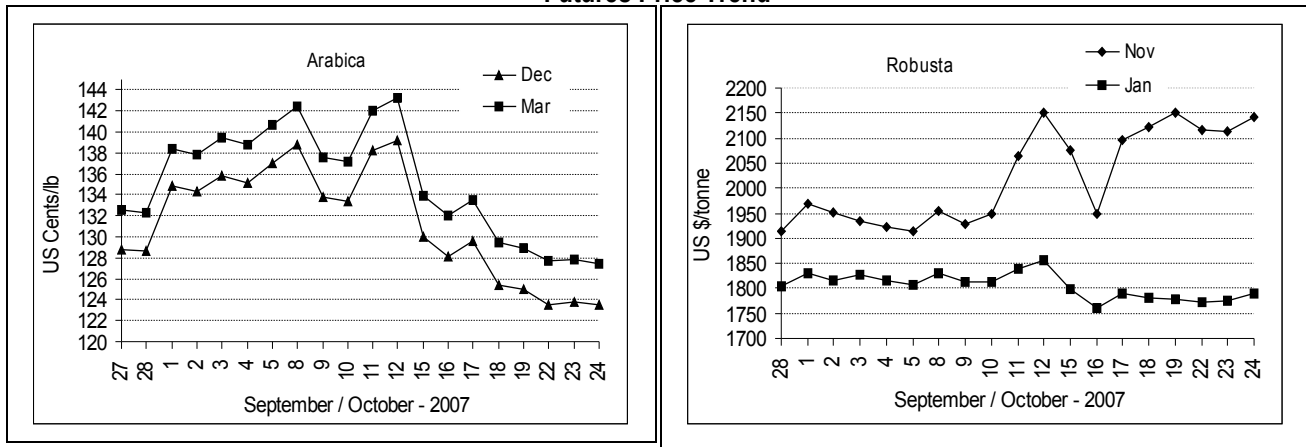
Futures Prices 24.10.2007					
New York US cents / lb			London US \$ / tonne and cents / lb in brackets		
Month	Price	Prev. Price	Month	Price	Prev. Price
Dec – 2007	123.50	123.85	Nov – 2007	2143 (97.20)	2112 (95.80)
Mar – 2008	127.50	127.90	Jan – 2008	1791 (81.24)	1775 (80.51)
May – 2008	129.85	130.15	Mar – 2008	1768 (80.20)	1753 (79.51)

ICO Indicator Prices of 23.10.2007 and previous price in brackets (US cents/lb)

Arabica (N.Y)	Robusta (N.Y)
128.94 (128.63)	102.00 (102.25)

Exchange Rate Rs./ US \$
39.57

Futures Price Trend



Market Analysis

ICE pit-traded arabica coffee futures eased on Wednesday while rain needed for blossoming occurred in Brazil this week, spurring sellers. The market stayed in its range from the last two days, however, with industry buying below. December closed 35 points lower at \$1.2350 a pound. LIFFE robusta coffee futures reversed its slide. Supply concerns from Indonesia and Vietnam has given a lift to spot month prices in the past ten sessions. Jan ended up \$16 at \$1791/tonne while Mar closed \$15 higher at \$1768/tonne.

Global: Producers in Central America and most parts of Mexico expect to see healthy 2007-08 output, with harvesting having started recently in lower altitudes. Total combined production is seen up 6.9% to 12.546 million 60-kilogram bags in Costa Rica, El Salvador, Guatemala, Honduras and Nicaragua, according to forecasts by coffee organizations in those countries.

Differentials:	Ar. Plant. A	Ar.Chy.AB	Rob.Pmt.AB	Rob.Chy.AB
	NY +2	NY -15	LIFFE +530	LIFFE +135

ICTA Auction Prices Rs/Kg as on 11.10.2007

Grade	MNEB/AA	PB	A	AB	B	C	BBB
Arabica Plantation	116.90	134.40	116.00	---	106.00	---	77.20
Arabica Cherry	---	96.00	---	---	---	---	---
	RKR	PB	AA	AB	C	BBB	
Robusta Parchment	---	---	---	---	---	74.00	
Robusta Cherry	---	78.00	80.00	---	76.00	75.70	

Raw Coffee Price (Karnataka) as on 24.10.2007 in Rs./50 kg

Ar.Pmt	Ar.Chy	Rob.Pmt	Rob.Chy
4025 - 4250	2025 - 2300	3700 - 3975	1775 - 1900

Export update: From 1st January to October 24, 2007 (in metric tonnes)

INDIAN COFFEE		Ar.Pmt	Ar.Chy	Rob.Pmt	Rob.Chy	Instant	Total
1	Provisional exports (Indian coffee)	28219	9785	18662	78322	42059	177047
2	Provisional exports corresponding period last year	45169	9632	21906	90655	20079	187441
3	Provisional re-exports					11402	11402
4	Provisional re-exports corresponding period last year					27207	27207
5	Total provisional exports (1+3)	28219	9785	18662	78322	53461	188449
6	Total provisional exports corresponding period last year (2+4)	45169	9632	21906	90655	47286	214648

Disclaimer: The Board neither guarantees the accuracy of the information nor accept any liability whatsoever for any direct or consequential loss arising from the use of this report.